

*Ceramics*  
MONTHLY

MARCH 1980 \$1.25





# Ceramics MONTHLY

Volume 28, Number 3

March 1980

Letters to the Editor.....	7
Answers to Questions.....	9
Where to Show.....	11
Suggestions .....	15
Itinerary .....	17
Comment by Don Pilcher.....	23
Delhi Blue Art Pottery by Carol Ridker.....	31
The Adena-Hopewell Earthworks by Alan Fomorin.....	36
A Gas Kiln for the Urban Potter by Bob Bixler.....	39
Clay: Form, Function and Fantasy.....	43
Computer Glazes for Stoneware by Harold J. McWhinnie .....	46
The Three Kilns of Ken Ferguson by Clary Illian.....	47
Marietta Crafts National.....	52
Latex Tile Molds by Nancy Skreko Martin.....	58
Three English Exhibitions.....	61
News & Retrospect.....	73
Technical .....	93
Index to Advertisers.....	98

## Cover

Glazed porcelain canister, thrown, with pulled handle and fluted wall, by Joe Zeller, Athens, Ohio. This potter was one of 132 craft artists accepted in the recent Marietta College Crafts National Exhibition. Other works from this show are presented beginning on page 52.

**Publisher and Acting Editor:** SPENCER L. DAVIS

**Managing Editor:** WILLIAM C. HUNT

**Art Director:** ROBERT L. CREAGER

**Copy Editor:** BARBARA HARMER TIPTON

**Assistant Editor:** CAROL LEFEBVRE HAGELEE

**Circulation Manager:** MARY RUSHLEY

**Advertising Manager:** CONNIE BELCHER

**Editorial, Advertising, and Circulation Offices:** 1609 Northwest Blvd., P.O. Box 12448, Columbus, Ohio 43212. (614) 488-8236

**West Coast Advertising Representative:** Joseph Mervish Associates, 4721 Laurel Canyon, Suite 211, North Hollywood, California 91607. (213) 877-7556

Copyright © 1980 Professional Publications, Inc.

All rights reserved.

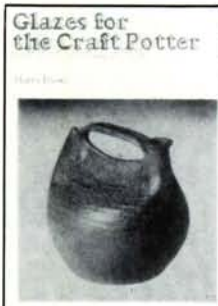
Ceramics Monthly (ISSN 009-0328) is published monthly except July and August by Professional Publications, Inc.—S. L. Davis, Pres.; P. S. Emery, Sec.: 1609 Northwest Blvd., Columbus, Ohio 43212. Correspondence concerning subscriptions, renewals and change of address should be mailed to the Circulation Department, Ceramics Monthly, Box 12448, Columbus, Ohio 43212. Second Class postage paid at Athens, Ohio, U.S.A. Subscriptions: One year \$12; Two years \$22; Three years \$30. Add \$2 per year outside U.S.A.

The articles in each issue of Ceramics Monthly are indexed in the Art Index. Microfiche, 16mm and 35mm microfilm copies, and xerographic reprints are available to subscribers from University Microfilms, 300 N. Zeeb Rd., Ann Arbor, Michigan 48106.

Manuscripts, photographs, color separations, color transparencies, graphic illustrations and news releases dealing with ceramic art are welcome and will be considered for publication. A booklet is available without cost to potential authors, describing procedures for the preparation and submission of a manuscript. Send manuscripts and correspondence about them to The Editor, Ceramics Monthly, Box 12448, Columbus, Ohio 43212.

## glazes for the craft potter

by Harry Fraser

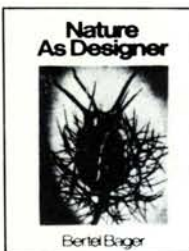
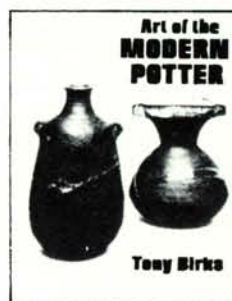


An invaluable text about glaze technology and practice. Glaze calculation, composition and application is considered at length. Further chapters deal with opacifiers, stains and coloring, binders, electrolytes and suspending agents. Fraser discusses the importance of health precautions when handling toxic materials. Further description include pottery faults and their remedies, concluding with a large number of glaze recipes. **\$9.95**

Once out of print—  
Back stock now available in  
limited quantities!

**JAPANESE DESIGN MOTIFS**, compiled by the Matsuya Piece-goods Store. A collection of over 4,000 individual designs representing the 900-year-old tradition of Japanese family crests. This is an unabridged republication of the catalogue originally compiled around 1913 by the Matsuya Piece-goods Store.

**ART OF THE MODERN POTTER**, Tony Birks. Fourteen of the world's leading potters are assembled here to illustrate the inspiration and enduring examples of contemporary ceramics. Each artist is introduced with a detailed essay including descriptions of working materials and methods followed by photographs of their work. Some of the potters chosen are: Ruth Duckworth, Hans Coper, Ian Godfrey, Lucie Rie and Ian Auld. Included are over 200 illustrations. 44 in color. **\$20.00**



**NATURE AS DESIGNER**, Bertel Bager. A unique visual pleasure—Bager's exciting collection of close-up photographs of plant life illustrating the beauty and fascinating forms of organic objects. Soft cover **\$7.95**

**HOW TO WRAP 5 MORE EGGS: TRADITIONAL JAPANESE PACKAGING**, Hideyuki Oka. This book's 244 exquisite photographs present the beauty in the look and feel of ordinary, humble things. It is a visual delight, revealing the relationships between hand, material, use and shape made clear through the remarkable ingenuity of Japanese packaging. **\$17.50**



- U.S. mail orders under \$10.00 include \$1.00 postage.
- non-U.S. orders include \$2.50 postage (please use international bank draft drawn in U.S. funds).
- free catalog on request.



**eagle ceramics**  
main office and warehouse  
12266 wilkins avenue  
rockville, maryland 20852  
(301) 881-2253

### other locations

1300 west 9th street  
cleveland, ohio  
44113  
(216) 241-4767

8 colonial avenue  
wilmington,  
delaware 19805  
(302) 654-2344

rt.-2 box 287  
wendell,  
north carolina  
27591  
(919) 266-1348





## Clay: Form, Function and Fantasy

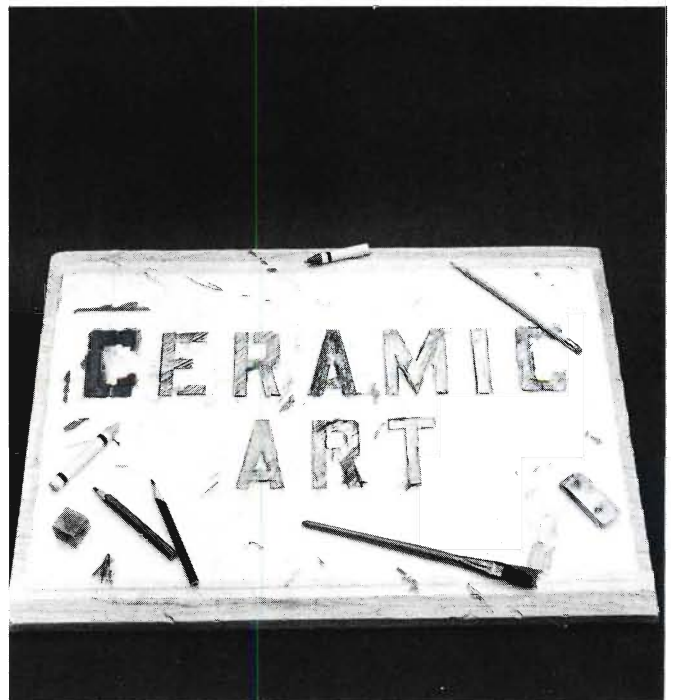
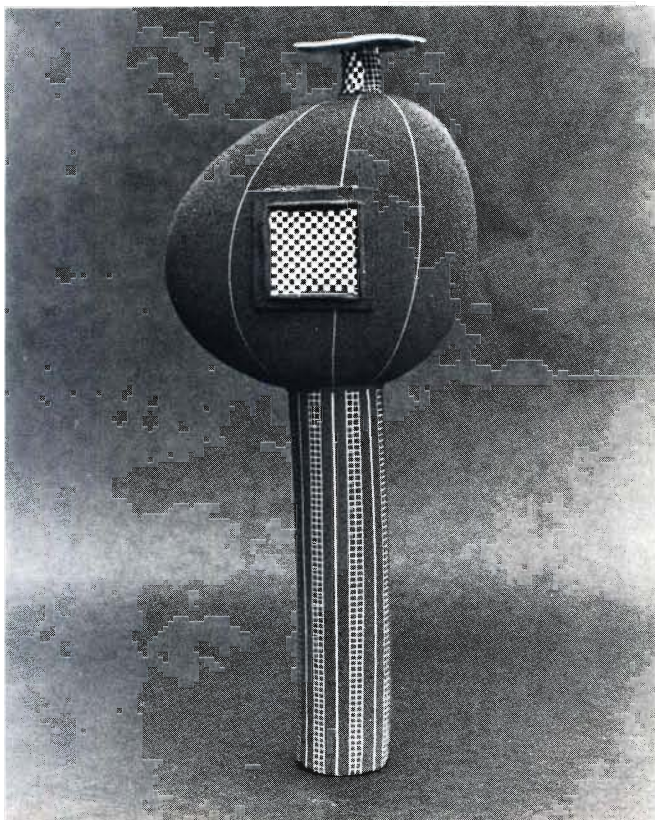
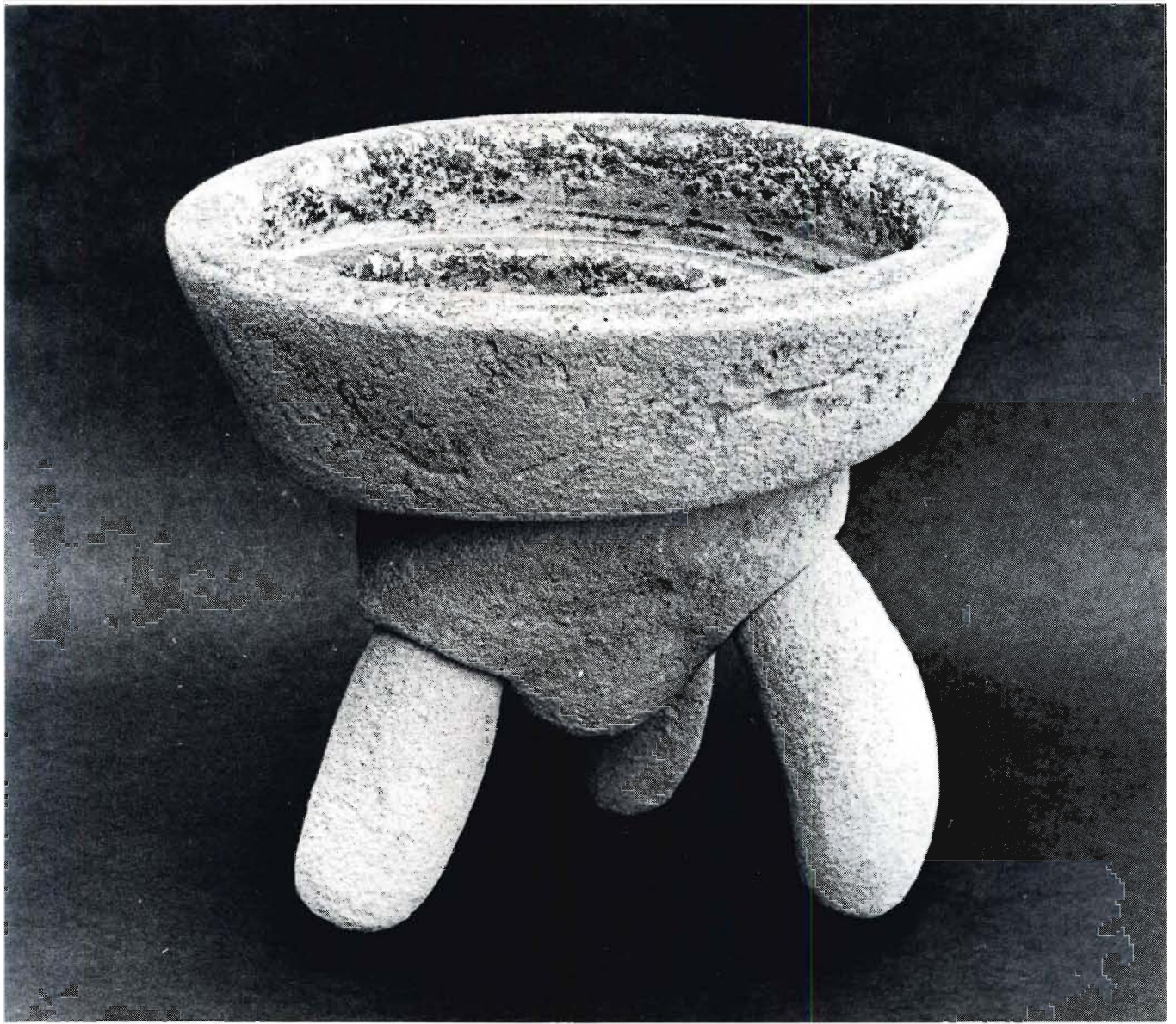
THE SECOND ANNUAL "Clay: Form, Function and Fantasy" exhibition, displayed earlier last year at Long Beach Gallery (California), was expanded from statewide to national scope. Conceived as a general survey show, 62 works from 683 entries were selected by juror Lukman Glasgow. Following his suggestion, the \$1500 in prize money was divided into nine purchase awards, forming the basis of a permanent ceramics collection for the city of Long Beach.

Above "Volcano " 13 inches square, handbuilt clay and plastic, by Beverly Mayeri, Mill Valley, California.

Right Box with blackbird, 9 inches in diameter, raku-fired clay with slips and stains, by Marlene Jack, Williamsburg, Virginia.











Above, left *Castable refractory vessel*, 15 inches in height, by Luis Bermudez, Van Nuys, California.

Above *"Emerging Vision,"* earthenware plate, 15 inches in diameter, with lusters and neon, by Kathy Erteman, Signal Hill, California.

Far left *"Rock Pot Assemblage,"* porcelain, 16 inches in height, by Patrick McConville, Moscow, Idaho.

Left *"Ceramic Art"* low-fire clay assemblage, 20 inches in width, embellished with glaze, crayon and watercolor, by Ed Forde, Los Angeles.